



Indianapolis Airport Authority



**UN-AUDITED
SUMMARIZED BUSINESS REPORT
September 2016**

**Indianapolis Airport Authority
Management Highlights
Year-To-Date as of September 30, 2016**



Total Operating Revenue through September exceeds Budget \$6.9 million

- Parking & GTC Revenue: Revenues exceed budget by \$3.9 million or 11.4% attributable to greater year-to-date enplaned passengers of 13.8%.
- Properties Revenue: Revenues \$1.6 million or 10.5% more than planned relating to the Eagle Hub building lease extension not budgeted and greater commercial space rental, ground handling and tie-down parking fees.
- Retail Revenue: Total revenues exceed budget by \$1.2 million or 8.3% driven by higher enplaned passengers than planned.
- Airline Revenue: Revenues exceed budget by \$.8 million or 2.1% relating to higher passenger landing weights including increased service from Allegiant and Southwest.

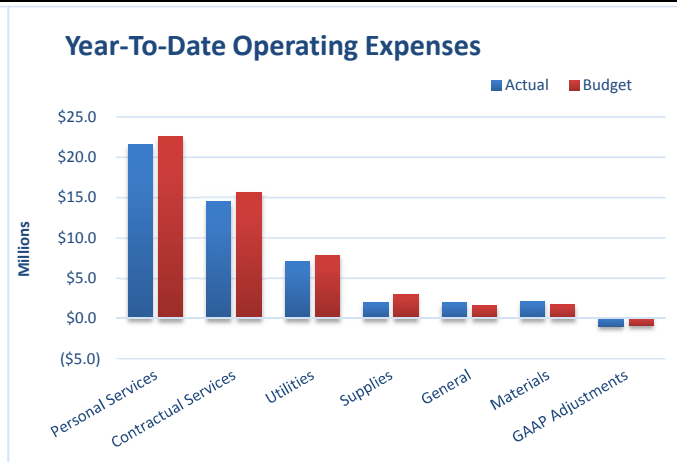
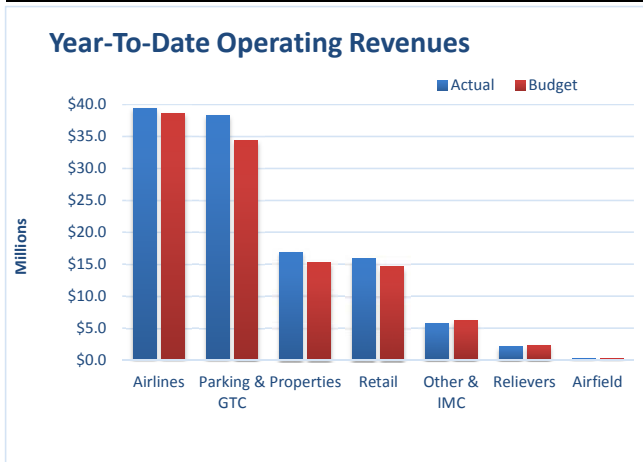
Total Operating Expenses through September below Budget \$3.2 million

- Contractual Service Expense: Expenses \$1.2 million or 7.4% under budget due to lower professional fees and print/advertising/marketing as well as timing of projects for repairs & maintenance and contract services associated with maintaining assets.
- Personal Service Expense: Expenses \$1.0 million or 4.5% less than planned primarily attributable to vacancies not planned in Parking and Administrative departments.
- Supplies Expense: Expenses \$0.9 million or 31.2% below budget due to lower fuel usage and rates as well as lower snow/ice chemical.
- Utilities Expense: Expenses below budget by \$0.8 million or 10.1% attributable to milder weather in the first quarter than anticipated.

Indianapolis Airport Authority
Analysis of Operating Revenues & Expenses
Year-To-Date as of September 30, 2016

Year-To-Date Operating Revenues				
	Actual	Budget	\$ Incr/(Decr)	% Incr/(Decr)
Operating Revenues:				
Airlines	\$ 39,467,267	\$ 38,665,185	\$ 802,082	2.1%
Airfield	271,248	243,999	27,249	11.2%
Retail	15,818,749	14,610,038	1,208,711	8.3%
Parking & GTC	38,335,775	34,406,950	3,928,825	11.4%
Properties	16,837,099	15,236,620	1,600,479	10.5%
Relievers	2,033,728	2,265,391	(231,663)	-10.2%
Other & IMC	5,783,076	6,171,033	(387,957)	-6.3%
Total	\$ 118,546,942	\$ 111,599,216	\$ 6,947,726	6.2%

Year-To-Date Operating Expenses				
	Actual	Budget	\$ Incr/(Decr)	% Incr/(Decr)
Operating Expenses:				
Personal Services	\$ 21,550,878	\$ 22,560,524	\$ (1,009,646)	-4.5%
Contractual Services	14,443,369	15,595,676	(1,152,307)	-7.4%
Utilities	7,067,541	7,858,617	(791,076)	-10.1%
Supplies	2,009,699	2,922,778	(913,079)	-31.2%
Materials	1,970,778	1,628,041	342,737	21.1%
General	2,146,029	1,741,556	404,473	23.2%
GAAP Adjustments	(994,346)	(882,365)	(111,981)	-12.7%
Total	\$ 48,193,948	\$ 51,424,827	\$ (3,230,879)	-6.3%



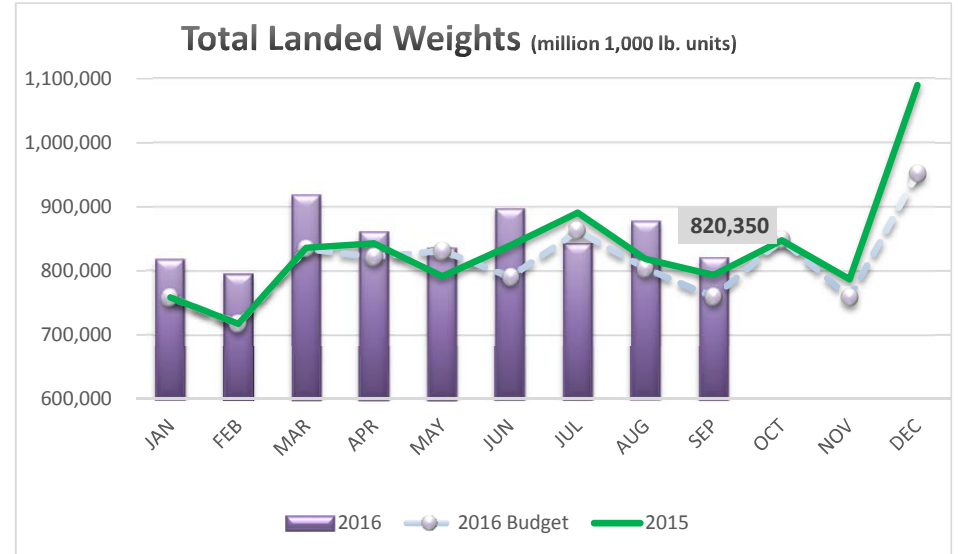
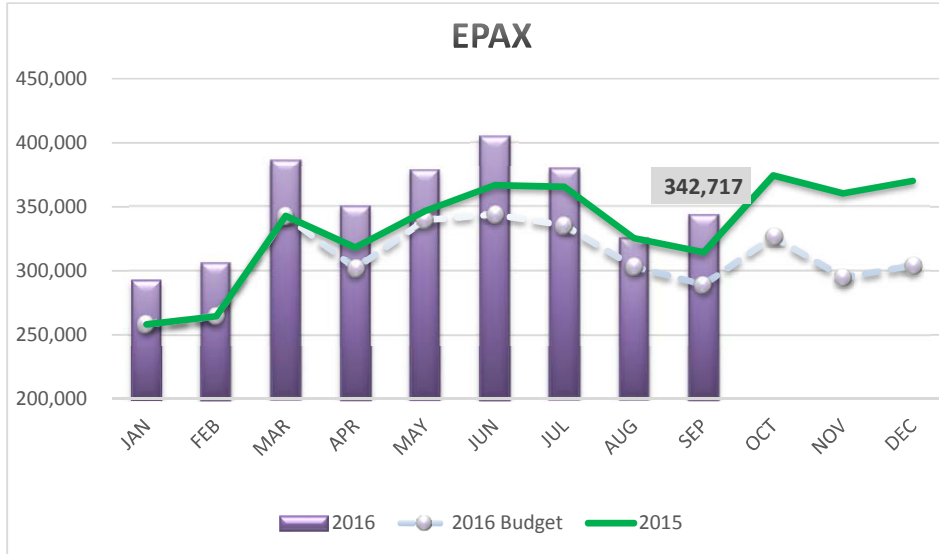
Indianapolis Airport Authority Operations Statement September 30, 2016



	SEPTEMBER 2016				YEAR-TO-DATE			
	Actual	Budget	\$ Var Incr/(Decr)	% Var	Actual	Budget	\$ Var Incr/(Decr)	% Var
Operating Revenue	12,912,474	11,877,958	1,034,516	9%	118,546,942	111,599,216	6,947,726	6%
Operating Expense	5,701,866	5,479,251	222,615	4%	48,193,948	51,424,827	(3,230,879)	-6%
Income from Operations before Depreciation	7,210,608	6,398,707	811,901	13%	70,352,994	60,174,389	10,178,605	17%
Depreciation	7,737,749	7,737,749	-	0%	70,180,324	70,180,324	-	0%
Income (Loss) From Operations	(527,141)	(1,339,042)	811,901	61%	172,670	(10,005,935)	10,178,605	102%
Nonoperating Revenues (Expenses)								
State and local appropriations	2,282,517	2,225,405	57,112	3%	20,524,230	20,028,644	495,586	2%
Federal operating grants	48,235	61,292	(13,057)	-21%	548,985	551,625	(2,640)	0%
Passenger facility charges	1,505,145	1,236,732	268,413	22%	13,287,675	11,432,708	1,854,967	16%
Customer facility charges (rental cars)	650,252	605,619	44,633	7%	5,434,160	4,808,356	625,804	13%
Investment income	416,596	323,441	93,155	29%	3,983,805	2,910,976	1,072,829	37%
Interest Expense - cash payments required	(3,548,729)	(3,755,949)	207,220	6%	(35,327,967)	(33,835,661)	(1,492,306)	-4%
Interest Expense - capital lease	(104,625)	(47,512)	(57,113)	-120%	(961,228)	(465,642)	(495,586)	-106%
Interest Expense - non cash amortization and capitalized interest	277,590	(97,797)	375,387	384%	1,155,483	(887,025)	2,042,508	230%
Gain (Loss) on disposals & other	6	-	6	100%	387,416	-	387,416	100%
	1,526,987	551,231	975,756	177%	9,032,559	4,543,981	4,488,578	99%
Increase/(Decrease) in Net Position Before Capital Contributions, Grants & Charges	999,846	(787,811)	1,787,657	227%	9,205,229	(5,461,954)	14,667,183	269%
Capital Contributions, Grants & Charges								
Federal, state and local grants	-	-	-	n/m	2,960,202	2,960,000	202	0%
	-	-	-	n/m	2,960,202	2,960,000	202	0%
Increase (Decrease) in Net Position	999,846	(787,811)	1,787,657	227%	12,165,431	(2,501,954)	14,667,385	586%

Note1: Indianapolis Maintenance Center (IMC) included in above numbers

Indianapolis Airport Authority Airline Activity & Other Analysis September 30, 2016



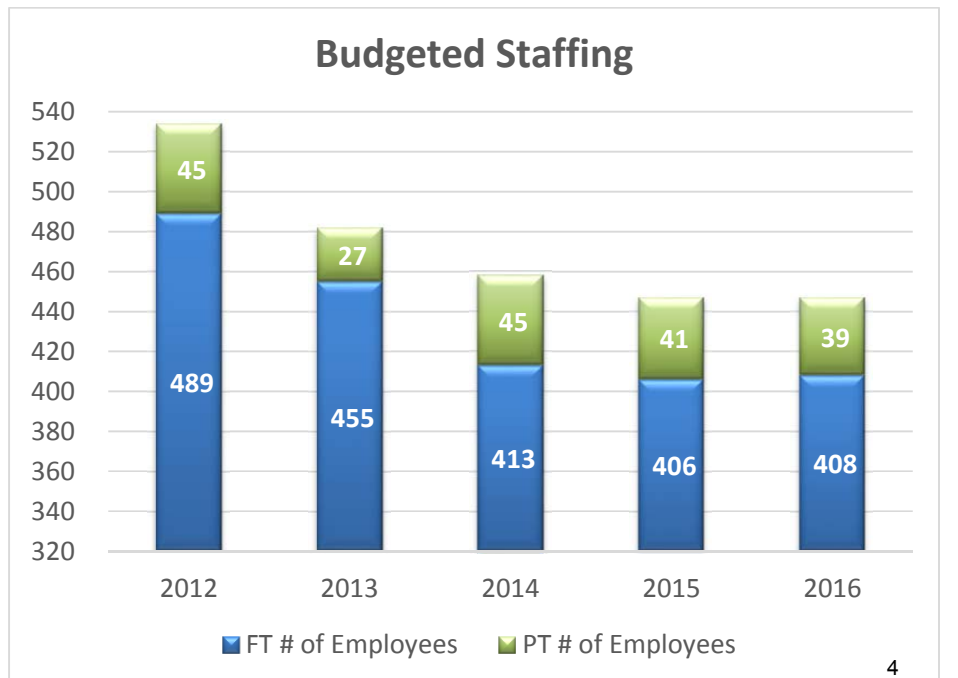
Operating Days Cash on Hand:

Cash on Hand at month end **\$91,186,606 ***

Daily Average of
2016 Budgeted Operating Expenses **\$191,897**

Total Days Cash on Hand **475**

**net of expected transfers and includes CIF Reserve*



Indianapolis Airport Authority
Balance Sheet
As of September 30, 2016

	12/31/2015 (Audited)	9/30/2016 (Unaudited)	Inc (Dec)
Assets and Deferred Outflows of Resources			
Current Assets			
Cash and Cash Equivalents			
Restricted & Unrestricted Funds	\$ 57,916,986	\$ 28,554,883	\$ (29,362,103)
Receivables, net	19,056,931	36,150,750	17,093,819
Other Current Assets	5,540,634	4,504,301	(1,036,333)
Total current assets	82,514,552	69,209,935	(13,304,617)
Noncurrent Assets			
Cash and cash equivalents, restricted	73,581,894	91,969,227	18,387,334
Investment Securities & Derivatives	145,744,763	157,727,675	11,982,912
Deposits, Deferred Chgs, & Other	1,336,100	1,106,334	(229,766)
Land, Property, & Equipment, Net	1,889,782,281	1,835,531,161	(54,251,120)
Total noncurrent assets	2,110,445,038	2,086,334,397	(24,110,641)
Total assets	2,192,959,590	2,155,544,332	(37,415,257)
Deferred Outflows of Resources			
Deferred loss on refunding of debt	35,080,181	30,293,469	(4,786,712)
Accumulated decrease in fair value of hedging derivatives	19,836,882	19,836,882	-
Total assets and deferred outflows of resources	\$ 2,247,876,653	\$ 2,205,674,683	\$ (42,201,970)
Liabilities, Deferred Inflows of Resources and Net Position			
Current Liabilities			
Payables and Other Liabilities	\$ 22,760,844	\$ 37,327,965	\$ 14,567,122
Deferred revenue - interest rate swap	-	-	-
Short-term debt	-	-	-
Current portion of debt	56,546,957	56,546,957	-
Accrued interest on debt	14,097,179	8,987,724	(5,109,456)
Total current liabilities	93,404,980	102,862,646	9,457,666
Noncurrent Liabilities			
Derivative instruments - interest rate swap agreements	84,551,289	84,551,289	-
Deferred inflows - derivative financial instruments	-	-	-
Bonds payable and other debt, payable from restricted assets	1,021,056,134	957,231,068	(63,825,066)
Total noncurrent liabilities	1,105,607,423	1,041,782,357	(63,825,066)
Total liabilities	1,199,012,403	1,144,645,002	(54,367,401)
Net Position			
Invested in capital assets, net of related debt	850,119,605	825,847,124	(24,272,481)
Restricted for			
Capital projects	52,631,491	86,525,368	33,893,877
Debt service	65,153,056	78,346,305	13,193,249
Other	3,638,308	2,780,474	(857,834)
Total restricted net position	121,422,855	167,652,147	46,229,292
Unrestricted	77,321,790	67,530,410	(9,791,380)
Total net position	1,048,864,250	1,061,029,681	12,165,431
Total liabilities, deferred inflows of resources and net position	\$ 2,247,876,653	\$ 2,205,674,683	\$ (42,201,970)